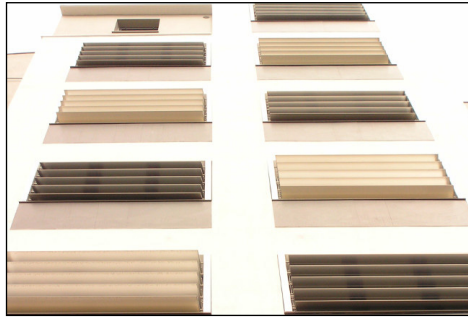


## louvers

architectural shade  
COOL INSIDE



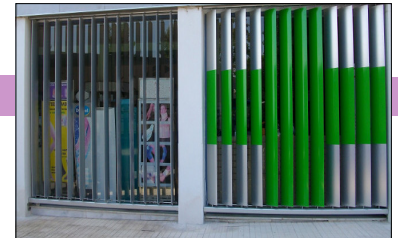
Louver systems, in vertical or horizontal arrangements, moving or fixed, not only complement the architecture of the building but they are also an integral part of the modern bioclimatic designs as they keep the solar heat away and provide a pleasant living or working environment. All louvers are made from high grade aluminum and components from stainless steel for longevity. All systems are designed for maximum strength and backed by a 5 year warranty. Standard mounting is provided or can be manufactured to specifications.



horizontal or vertical



fixed or movable

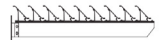


aluminum profile louvers

fixed louvers



Fixed louvers are of either Z or semi elliptical profile. They are used in specific open spaces, staircases, machinery space or in small projects



technical data	AL-170	AL-300	AL-450	AL-600
length, L, mm	180	310	460	610
width, W, mm	30	40	40	40
thickness, mm	1.4	1.4	1.4	1.4
weight, kg/m <sup>2</sup>	9.79	10.61	10.92	11.07
max height vertical, m	3	4	4	4
max width horizontal, m	3.5	5	5	5



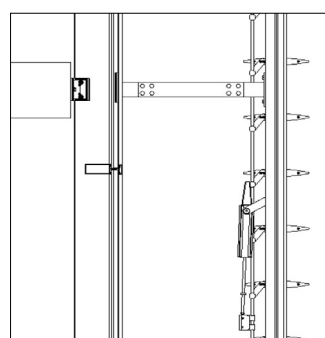
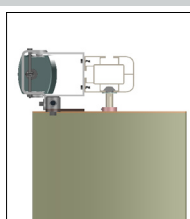
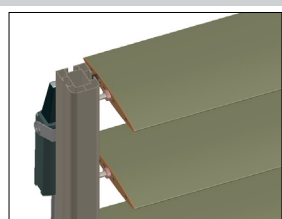
Fixed or movable, louvers are of aluminum profile. They are durable, elegant, cost effective and of excellent quality



details



Colors



The mullion has a T-slot on its three sides for easy mounting of the louver shaft and of the support to the building. If movable, one 650N DC motor can operate up to 20m<sup>2</sup> or as few louvers as necessary

The basic color is anodised aluminum. However as an option any Ral color, wood imitation or even custom logo can be ordered.



optional colors

any RAL or wood imitations